



s.r.l. lamiere perforate speciali

LAMIERE BUGNATE DECORATIVE - DECORATIVE EMBOSSED METAL

I formati standard sono mm 1000x2000 - 1250x2500 - 1500x3000

Il materiale usato è l'acciaio inossidabile AISI 304

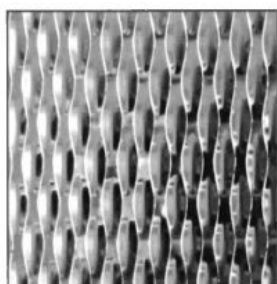
La disponibilità di materiale e formato può non essere la stessa per tutti i tipi di *lamiera bugnate decorative*.



Standard sizes are mm 1000x2000 - 1250x2500 - 1500x3000

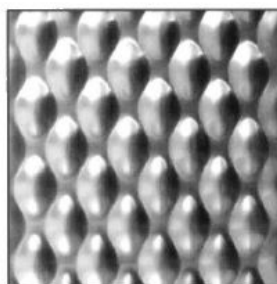
The only material we use for this product is the stainless steel AISI 304

The availability of material and size may be not the same as for all the types of *decorative embossed metal*.



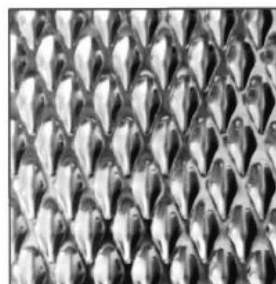
5WL

formato / size : h. 1000/1250/1500*
INOX - Stainless steel
spessore / thickness : 0,8 ÷ 2 mm



6WL

formato / size : h. 1000/1250/1500*
INOX - Stainless steel
spessore / thickness : 0,8 ÷ 2 mm



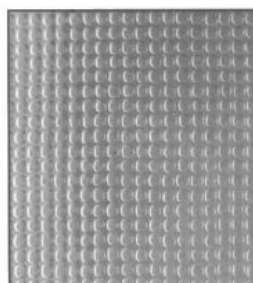
7WL

formato / size : h. 1000/1250/1500*
INOX - Stainless steel
spessore / thickness : 0,8 ÷ 2 mm



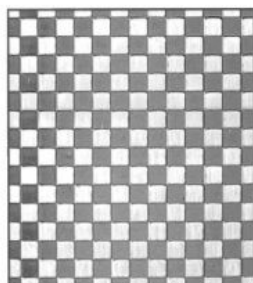
8WL

formato / size : h. 1000/1250/1500*
INOX - Stainless steel
spessore / thickness : 0,8 ÷ 2 mm



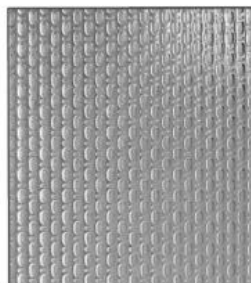
CANVAS

formato / size : h. 1000/1250/1500*
INOX - Stainless steel
spessore / thickness : 0,8 - 1,5 mm



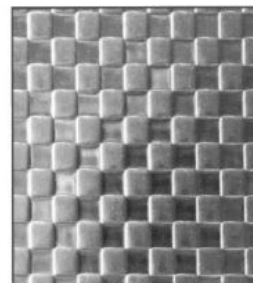
CHECKS

formato / size : h. 1000/1250/1500*
INOX - Stainless steel
spessore / thickness : 0,8 - 1,5 mm



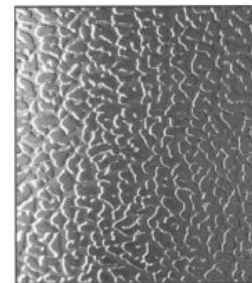
LINEN

formato / size : h. 1000/1250/1500*
INOX - Stainless steel
spessore / thickness : 0,8 - 1,5 mm



SQUARES

formato / size : h. 1000/1250/1500*
INOX - Stainless steel
spessore / thickness : 0,8 - 1,5 mm



12LG

formato / size : h. 1000/1250/1500*
INOX - Stainless steel
spessore / thickness : 0,8 ÷ 2 mm

I PRODOTTI RAFFIGURATI NELLE FOTO POTREBBERO NON ESSERE IN SCALA 1/1
PICTURES ARE NOT IN 1/1 SCALE

* = Formato non disponibile (da produrre appositamente)

* = 1500x3000 not standard size (we could produce it on demand)